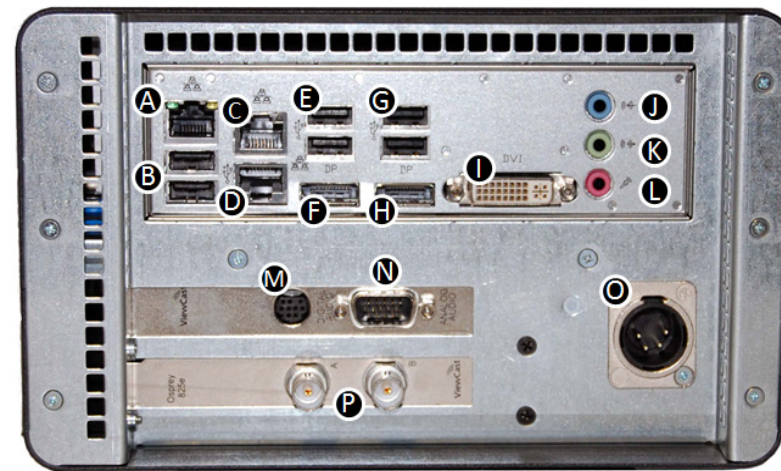




Congratulations on the purchase of your new GoStream system. The following steps in this *Quick Start Guide* will help you set up and configure your GoStream system so you can begin streaming or capturing video as quickly as possible. You can perform most of the basic operations from the touch panel on the GoStream system. The web interface also allows quick and easy access to its operational features. You must modify any advanced setup options of the GoStream encoders through this interface before running an encoder session. Please refer to the *GoStream User Guide* on the included CD for more detailed instructions.

Complete the following steps to begin operating the GoStream system:



1. Connect to an electrical power source



DC power connector for 12 volts, DC, 50-60 Hz **O**
Plug the AC to DC included with your system into this connector and plug the opposite end into an AC power source.

2. Connect video and audio sources

Video



SDI video input **P**
The high-definition and standard-definition serial digital interface (SDI) is a professional video input that may include embedded audio. SDI uses a COAX cable with a BNC connector.

Audio



Unbalanced audio input **N**
RCA connectors provide left and right stereo input. RCA connectors (standard consumer stereo audio connectors) are on most video players and video cameras.



Balanced audio input **N**
Through the analog audio breakout cable, these XLR connectors provide left- and right-balanced stereo inputs. High-end audio and video equipment may have these professional connectors.

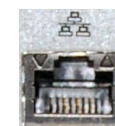


AES digital audio input **M**
Through the digital audio breakout cable, there are two stereo pairs of AES digital audio, AES1 and AES2.



SPDIF digital audio input **M**
Through the digital audio breakout cable, there are two stereo pairs of SPDIF digital audio.

3. Connect to an IP network



RJ-45 Ethernet connector **A, C or D**
The GoStream provides three network connectors. Use any jack to connect to your IP network.

NOTE: Contact your network administrator for assistance if you are unfamiliar with network protocols.

The network settings default to dynamically obtain an IP address from a DHCP server on the network. For most network environments, you do not need to modify these default settings. If the system does not find a DHCP server or it remains unavailable on the network, it assigns its own IP address.

Once connected to a network, you should be able to access the built-in web server by browsing to the unique machine name (the serial number located on the bottom or side of the appliance). You may also set the IP address through the web interface.

If you do not have a DHCP network or you cannot connect to the system through its DNS name, you can connect a monitor to the DVI-I port **I**, mouse, and keyboard directly to the USB ports (one is located on the front panel and six are on the back panel **B, E or G**). The GoStream system will have a Microsoft® Windows 7 desktop.

4. First start setup

The first time you power up the the system, it takes a few moments to boot up. The LCD display will present a series of menus that will assist you in setting up the system clock and date.

1) Press **Power** on the front panel. After the system powers up the first time, the following screen appears:

```
Welcome to setup!
Set time, date, and
video format:
ENTER to continue
```

2) Press **Enter**. The system prompts you to set the date.

```
Enter Date
MM-DD-YYYY
11-01-2013
Enter to Accept
```

3) Use the **Up** and **Down** arrows to change the numerical value of the month.

4) Press **Stop** to move to the field to the left. Press **Stream** to move to the field to the right.

5) Use the same process to set the **Day** and **Year** until you are satisfied with your settings.

6) Press **Enter** to accept the settings and move to the next screen to set the system clock.

7) Niagara systems use a 24-hour clock format, for its system clock entries. Use the **Up**, **Down**, and **Stream** buttons to set the hours and minutes of the system clock.

```
Enter Time
HH:MM
16:00
Enter to Accept
```

8) Press **Enter** to set the format. The following screen appears confirming you have successfully set up your GoStream.

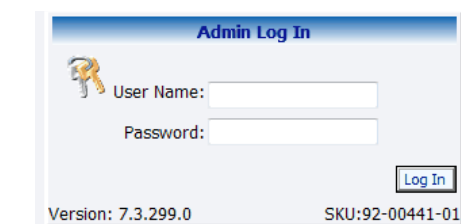
```
First run completed.
ENTER to Continue
```

9) Press **Enter** to exit the setup menu and reboot the appliance. The following screen appears:

```
ViewCast Corporation
Niagara 7.3.299.0
Serial: GN1345001
Bootling ...
```

10) From a separate computer on the same network as the system, launch a web browser such as Internet Explorer and enter the serial number or IP address of your system in the address bar. The serial number can be located on the bottom or side of the appliance in the format **GNxxxxxxx**. The serial number and IP address also appear on the LCD screens on the front panel.

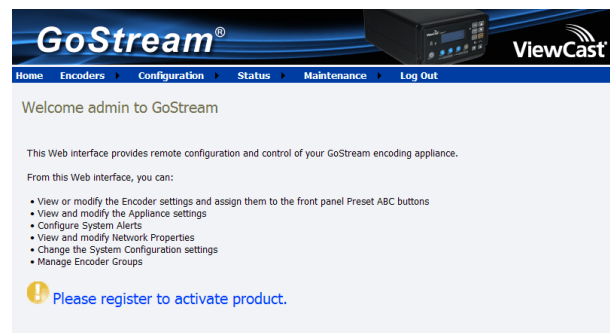
11) Click in the **User Name** field and enter **admin** as the user name. Click in the **Password** field and enter **admin** as the password. Then, click **Log in** or press **Enter**.



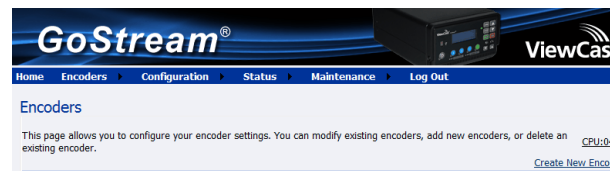
Continued on back

4. First start setup *continued*

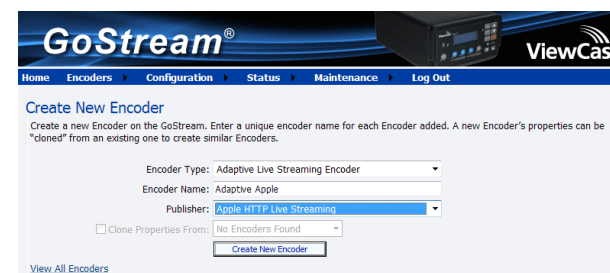
12) After you enter your valid user name and password, the GoStream Welcome window and menu bar appear.



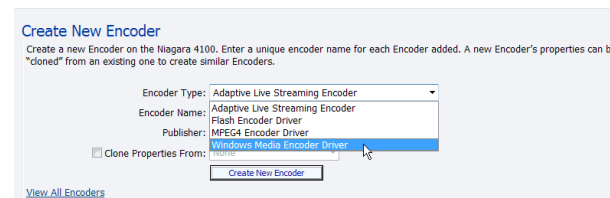
13) To create an encoder profile, from the menu bar, click **Encoders > All Encoders**. This example demonstrates how to create a Windows Media encoder.



14) Click **Create new encoder**.



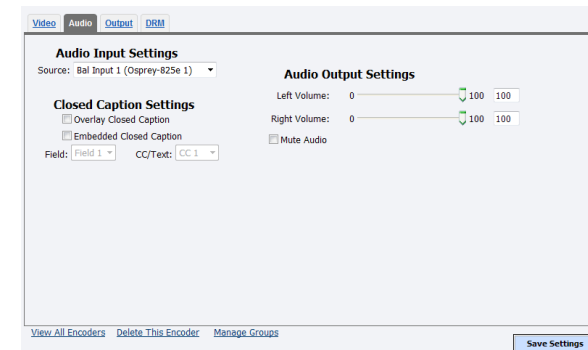
15) Select **Windows Media Encoder Driver** from the drop-down menu in the Encoder Type field.



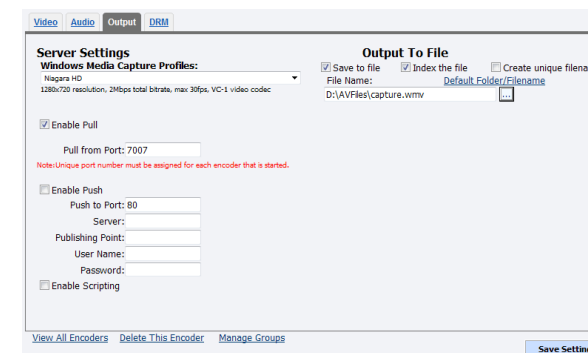
16) Enter a name for the encoder and then click **Create New Encoder**.

17) Click the **Video** tab and select the appropriate input settings.

18) Click the **Audio** tab and set **Source** to **SDI Input 1**.



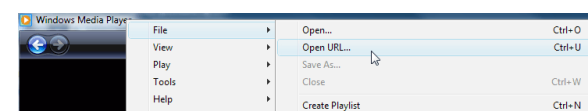
19) Click the **Output** tab. By default the **Enable Pull** check box is enabled and the **Pull from Port** field contains the port number **7007**.



20) If not desired, clear the **Save to File** check box. Click **Save Settings**.

21) When the **Operation Successful** window appears, click **OK**. Test this streaming profile from the Encoders window by clicking the red circle in the **Streaming** column for this encoder profile.

22) Open **Windows Media Player** from your desktop. Position the cursor to the left of the **Now Playing** option, right click, and select **File > Open URL**.



23) Enter the serial number and port number (in the format <http://gnxxxxxxx:7007>) in the **Open URL** window. Press **Enter**. Your streaming video from the system displays in the **Windows Media Player** window.

NOTE: You may also use the front panel menu and **Streaming** button to start streaming. See the *User Guide* for step-by-step instructions.

NOTE: Register the system as soon as possible by accessing the **Maintenance** menu.

The GoStream Front Panel



Use the following guide to familiarize yourself with the front panel controls of the GoStream system.

A: USB Port

- Use this port to export files to USB storage devices, installing updates or firmware, or connecting USB devices.

B: LCD Screen

- Displays menus and system messages.

C: Video Present

- Indicates when the system detects that a video source is connected to one of its video inputs.

NOTE: This light only illuminates when you start an encoder.

D: Menu Button

- Press this button to activate the GoStream menu on the LCD display.

E: Up Arrow Button

- Navigates the menu on the LCD display.

F: Enter Button

- Press this button to enter or accept the menu choice highlighted on the LCD display.

G: Down Arrow Button

- Navigates the menu on the LCD display.

H: Stream Button

- Press this button to start the encoder highlighted on the LCD display.

I: Stop Button

- Press this button to stop an encoder when it is highlighted on the LCD display.

J: Power Button

- Press this button once to power up the GoStream.
- Press this button once to power down the GoStream.

NOTE: Do not press and hold the Power button or pull out the cord to power down the system. These actions may damage your system.

K: Preset A B C Buttons

- When an encoder profile is assigned to one of these buttons, press the assigned button and then **Stream** to start the encoder.
- Press the assigned button and then **Stop** to stop the encoder.

L: Alarm Indicator Light

- When the indicator is lit, press this button to view a log of the most recent alarms.
- Press **Enter** to clear these alarms from the log.

M: Stereo Headphone Connection

- Allows headphones to be connected to the GoStream for audio monitoring.

N: Audio Level Meters

- Indicates audio input presence.

O: Stereo Headphone Connection Volume Button (Up/Down)

- Controls the audio level output of the headphone connection.