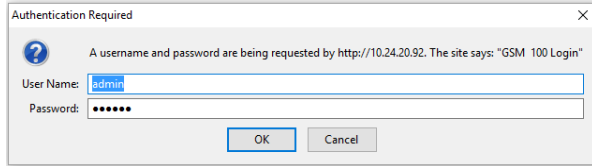


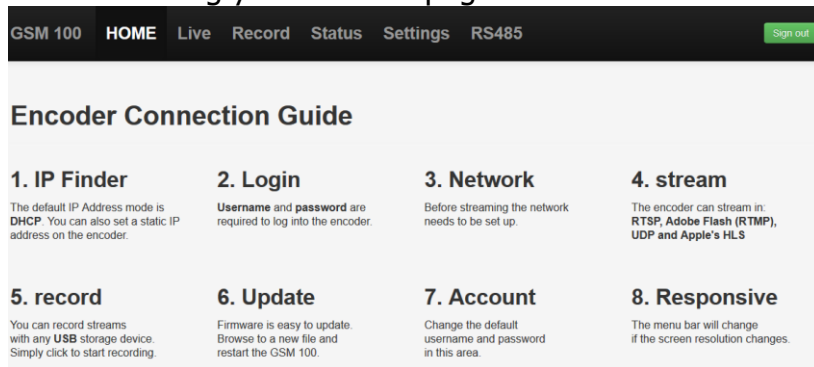
In this example we are using a GoStream Mini 100 encoder to stream to UStream.

First, connect to your encoder by entering its IP address in a browser window. Firefox or Internet Explorer are the recommended browsers.

Step 1: In the login dialog box, the default username is: admin, and the default password is: 000000 (6 zeros). It is recommended that you change the password.

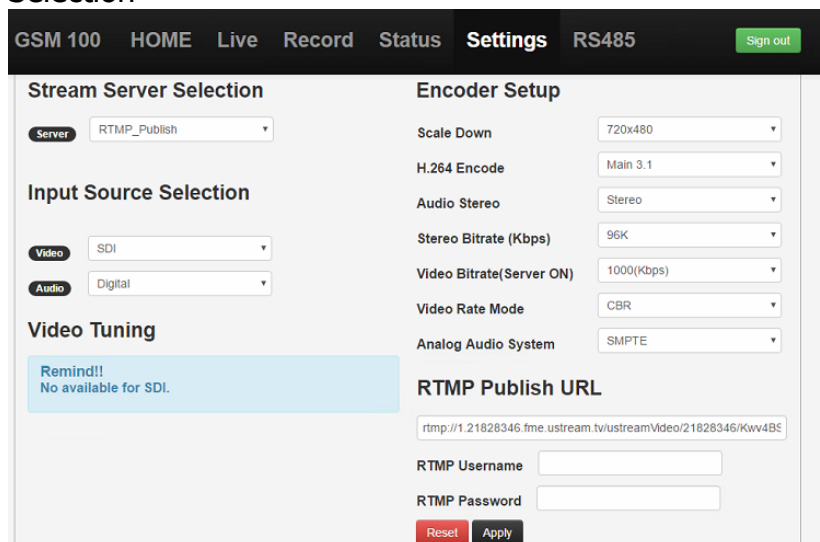


This will bring you to Home page for the Encoder:



Step 2: From this page, click on Settings/Live Stream Setup

Step 3: Then you will select RTMP_Publish from the drop down under Stream Server Selection



Step 4: Now you will select your video and audio inputs, Scaling, bit rate and you will enter your RTMP settings when you have the URL.

The screenshot shows the 'Live Stream Setup' interface. At the top, there is a navigation bar with 'GSM 100', 'HOME', 'Live', 'Record', 'Status', 'Settings', and 'RS485', along with a 'Sign out' button. The main heading is 'Live Stream Setup'. Below this, there are two columns of settings:

- Stream Server Selection:** A dropdown menu set to 'RTMP'.
- Input Source Selection:** 'Video' is set to 'SDI' and 'Audio' is set to 'Digital'.
- Encoder Setup:** 'Scale Down' is '720x480', 'H.264 Encode' is 'Main 3.1', 'Audio Stereo' is 'Stereo', 'Stereo Bitrate (Kbps)' is '96K', 'Video Bitrate (Server ON)' is '1000(Kbps)', 'Video Rate Mode' is 'CBR', and 'Analog Audio System' is 'SMPTE'.

At the bottom left, there is a blue reminder box: 'Remind!! No available for SDI.' At the bottom right, there are 'Reset' and 'Apply' buttons.

Step 5: To Connect to UStream, you will need the RTMP URL. You will find this in the Broadcast Settings/Encoder settings:

The screenshot shows the 'Encoder settings' page. It has a yellow header and a 'Back to Broadcast settings' link. Under 'Manual Entry', it instructs the user to enter values into their encoder's configuration interface. The 'RTMP URL' field contains 'rtmp://[redacted]@live.ustream.tv/ustream/vh' and the 'Stream Key' field contains 'wAgBFNw6pTXkzLG7D4E3SENg1jz7Nmp'. Below this, there is a section for 'Flash Media Encoder XML file' with a link to 'Download the Flash Media Encoder XML file for this channel'. At the bottom, there is a section for 'Streaming to Ustream from 3rd Party Encoders'.

This is the RTMP URL and the stream key. Insert a slash between the URL and the stream key and enter this in the RTMP field on the encoder.

It should look like this:

rtmp://1.XXXXXXXX.fme.ustream.tv/ustreamVideo/XXXXXXXX/Kwv4BSvHtYtsbcJUscPVdDwrBxwBPwmZ

The X's should be different numbers that are specific to your account.

Step 6: Click Apply and you will see the upload progress bar. This takes about a minute. If the encoder connects then it will come back to the main screen with the configurations. If it doesn't connect then it will come back with the Server in the off position.

At this point your video should be streaming!

