

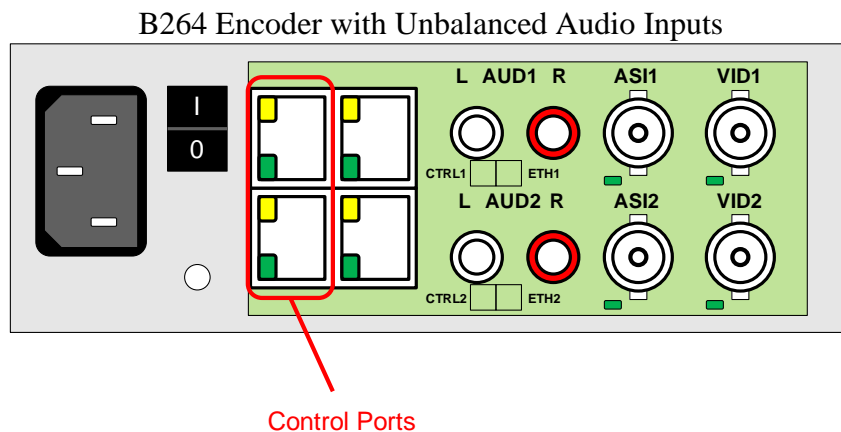


B264 Encoder and BRD Decoder Quick Start

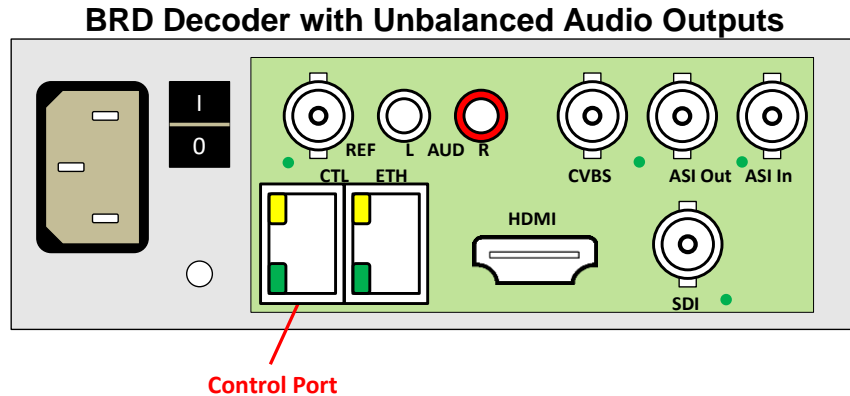
The B264 Encoder and BRD Decoder stand-alone devices are managed through the Dashboard application. Dashboard can control both the stand-alone devices, as well as openGear frames. The user interface for the modular device is essentially the same as the corresponding openGear cards. In this guide, we will refer to the B264 and BRD products as the “Device”.

The steps are as follows:

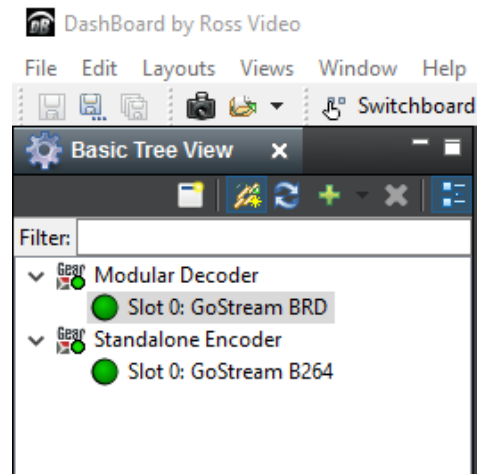
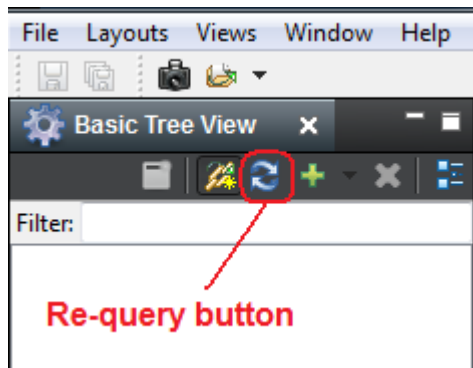
1. The first step is to install the Dashboard software. Dashboard is available for Windows, Linux¹, and Mac OSX. The Windows version is on the Niagara flash drive.
2. By default, the Device is configured with a factory IP address of **192.168.1.30** and a subnet mask of **255.255.255.0**. In order to perform the initial configuration, you will need to configure the PC/Mac running Dashboard for an IP address in the same network. We suggest you use **192.168.1.2**. Once you gain access to the Device, you can reconfigure its IP address to whatever value you require, or configure it to run DHCP.
3. Connect the PC/Mac running Dashboard and the Device to the same network. For simplicity, even running an Ethernet cable between the two devices will work. The Device has auto-crossover capabilities, so any Ethernet cable will work. Connect the cable to a control ports in the Device, as illustrated below:



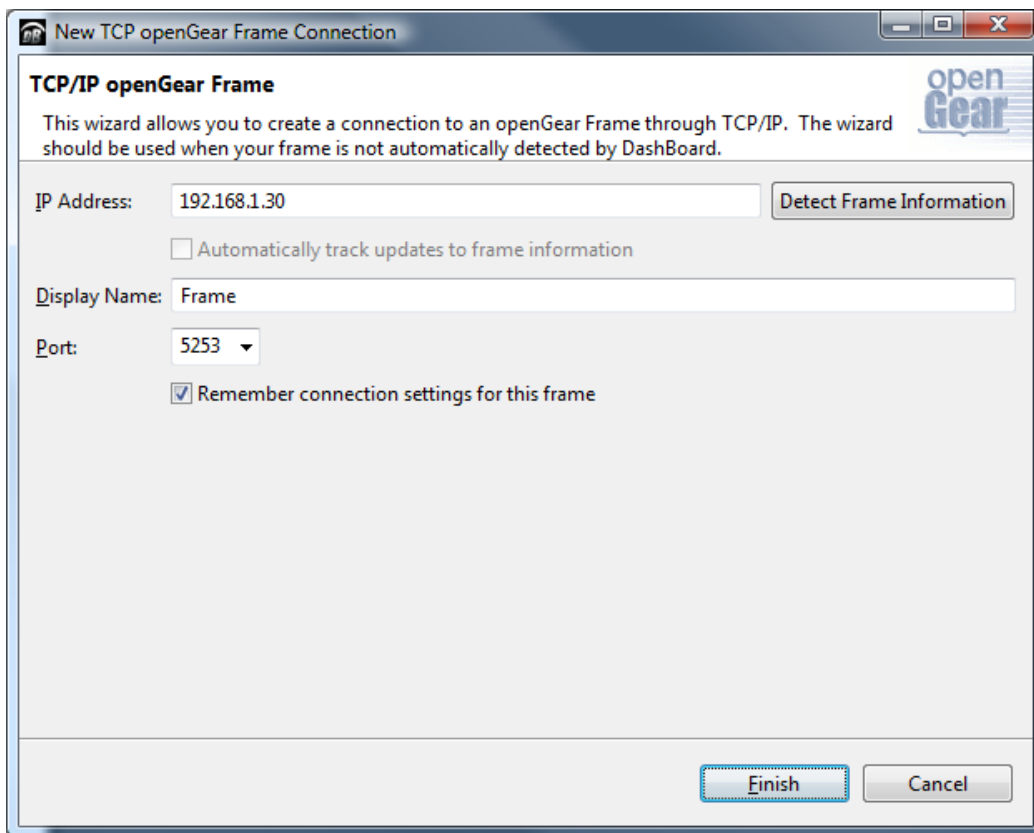
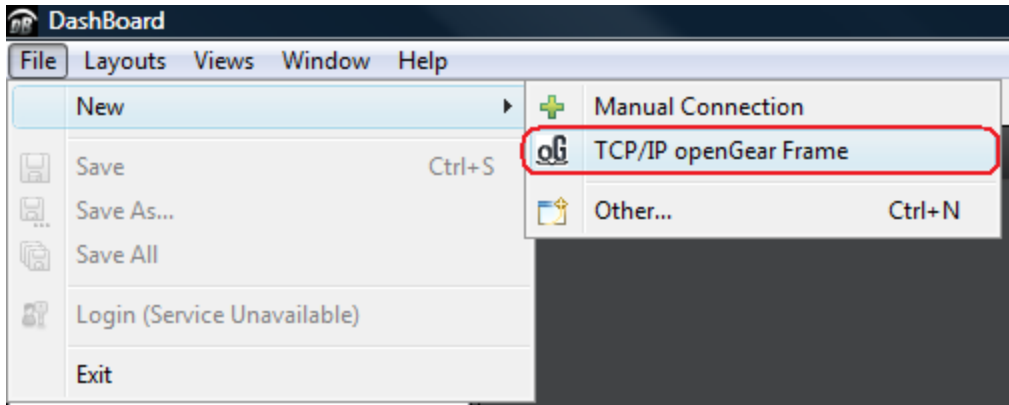
¹ Dashboard is not officially supported in 64-bit Linux distributions. Please consult the README.TXT file in the Linux directory for more details.



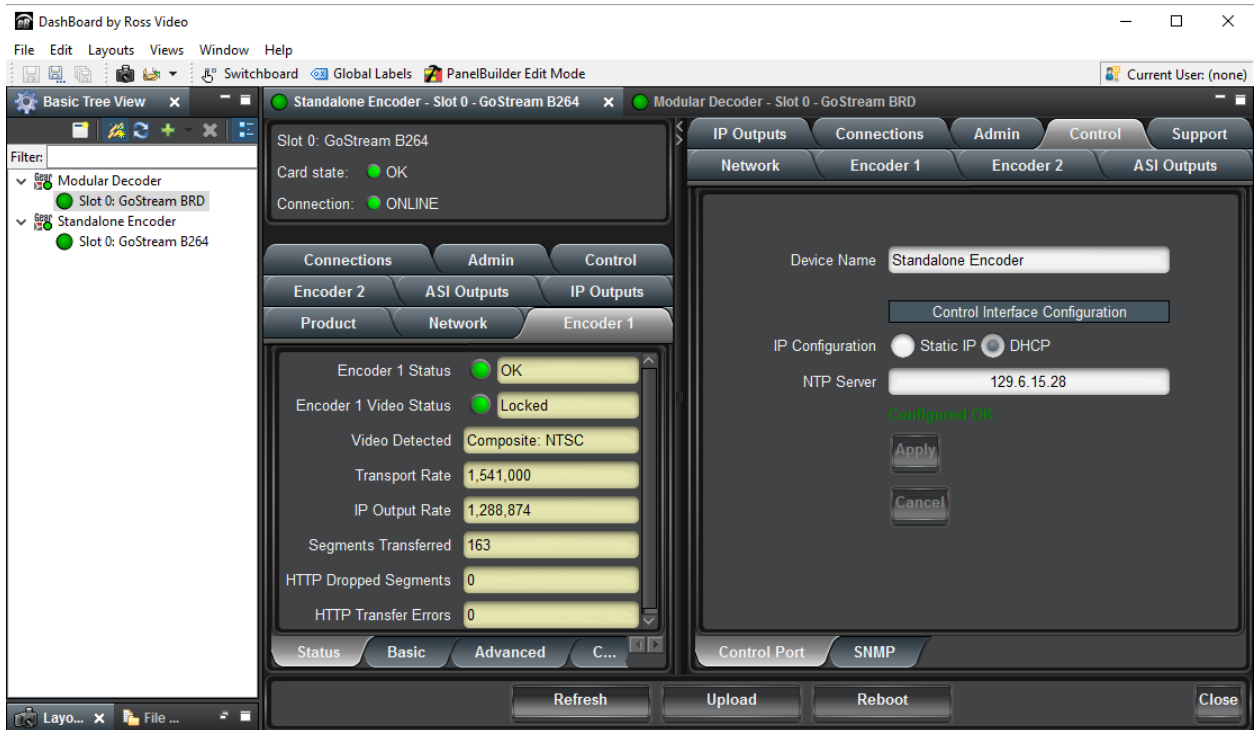
- The Dashboard application should automatically find the Device and display it in the tree view on the left. If the device is not automatically found, click on the re-query button at the top of the Dashboard tree view, as indicated below. If found, the B264 Encoder will be identified as **Standalone Encoder** and the BRD Decoder will be identified as **Modular Decoder**.



- In the unlikely case that the Device is not automatically found by Dashboard, you can force a manual connection. Select **File** → **New** → **TCP/IP openGear Frame**, enter the IP address of the Device, and click on **Finish**:



6. Once the Device is available on Dashboard, open its user interface (by double-clicking on **Standalone Encoder** or **Modular Decoder** to open it, and then on **GoStream B264 Encoder** or **GoStream BRD Decoder** in slot 0). Go to the **Control** tab on the right; you can now configure the IP address of the Device as desired. You can also rename the device if you wish.



7. Some Devices have two control ports, the encoder for example. They are intended for redundancy. You can connect either one of them (or both) to your control network. The device will use whatever port is connected to respond to control operations.

Note on DashBoard Versions

DashBoard versions 4.0.0 and 4.1.0 have significant GUI performance issues when used with the Device (GUI tabs may take noticeable time to update). Niagara Video recommends that only DashBoard versions 5.0.0 or higher used with the Device.